



TABLE 1	1.3kW		1.95kW		TABLE 2	1.3kW	1.95kW
Rated Voltage (V)	115	230	115	230	Heated Zone	6-9m <sup>2</sup>	9-12m <sup>2</sup>
Rated Current (A)	11.3	5.7	17.0	8.5	<i>This area heated figure is based on use in-doors and a mounting height of 2.3-2.5m</i>		
Fuse/Circuit Breaker Rating (A)	16	10	25	16			

RATED POWER	PART NO.	ELEMENTS	FRAME
1.3kW (2 x 650W)	IR2-1300W	Two white glazed ceramic elements	Stainless steel body
1.3kW (2 x 650W)	IR2-1300B	Two black glazed ceramic elements	Black powder coated stainless steel body
1.95kW (3 x 650W)	IR3-1950W	Three white glazed ceramic elements	Stainless steel body
1.95kW (3 x 650W)	IR3-1950B	Three black glazed ceramic elements	Black powder coated stainless steel body

**FEATURES AND BENEFITS**

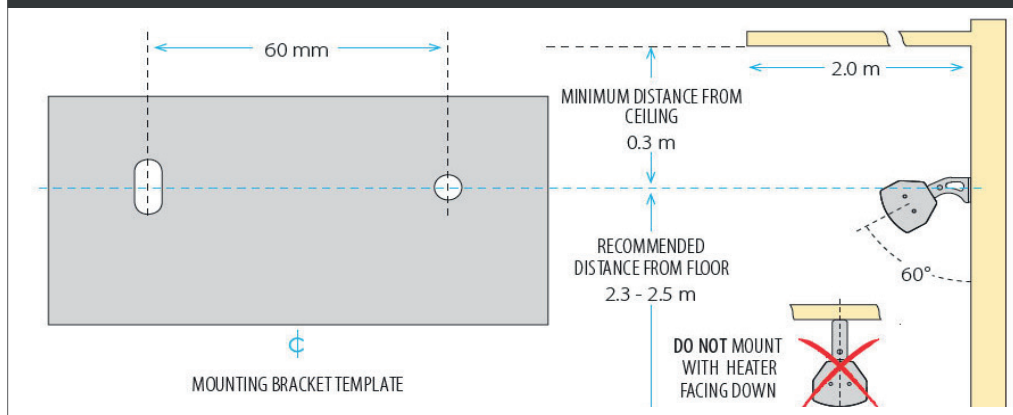
The Herschel Advantage IR range make ideal workshop heaters for commercial and workspace applications. The wall-mounted units are designed for spaces with walls giving adequate clearance from the ground (2.3 – 2.5m) and from the ceiling above (minimum 0.3m). Available in two power outputs of 1300 & 1950 watts, these heaters produce a comfortable level of heat for a commercial working environment or garage.

Additional benefits include:

- No exhaust emissions so no requirement for planning;
- They operate silently and without fumes – so no health and safety issues;
- Installation is much cheaper than oil or gas alternatives – all you require is electric cable;
- No Safety inspections required for GAS installations;
- No maintenance. You do not have to maintain an infrared heater once installed;
- You can “focus” the heat exactly to where you want it – because there is no convection of heat, none is wasted blowing into areas it is not wanted.

For larger commercial projects we would always recommend Herschel carry out a survey or detailed desktop assessment.

**DIAGRAM 1**



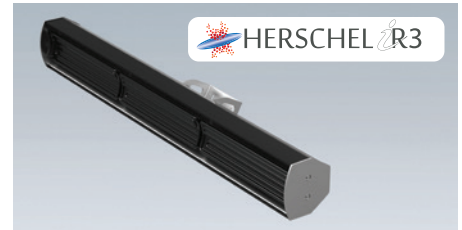
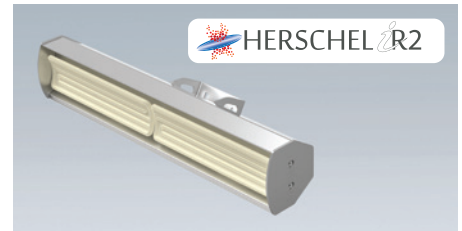
**IMPORTANT**

The heating elements reach very high temperatures without visible signs of the unit being on. Because Advantage IR2 & IR3 are not fitted with a protective grill, the heaters are not for domestic or household use. Also, the heaters must not be used or installed in any commercial premises where they can be accidentally touched or where there is a risk of damage to the ceramic elements.

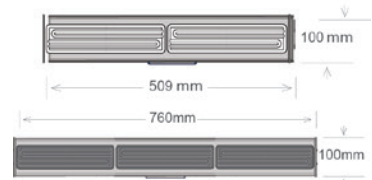
In areas with air movement/wind the directional Far Infrared spread may reduce by 1/3 to 1/2. In these areas we recommend mounting at the lowest height and proportionally increasing the number of heaters. Heated zones are based on recommended mounted heights. Please refer to the Herschel ADVANTAGE IR2 & IR3 Installation Manual before installation and for guidance on heated zones and heat intensity at alternative mounting heights.

The Herschel Advantage IR rises to very high temperatures in use and the unit (in particular the heater elements) must not be touched when power is applied. After switch off the elements remain hot for a considerable time and the unit should not be touched for a minimum of 30 minutes. NEVER use the heater to ignite materials. Ensure supply voltage does not exceed 245 volts.

The Herschel Advantage IR is guaranteed against failure due to faulty materials or workmanship for five years from the date of purchase and the ceramic elements are warranted for 12 months. In the unlikely event of failure of the unit within this time, the unit must be returned to the supplier for repair or replacement. Refer to the warranty policy on [Herschel-infrared.com](http://Herschel-infrared.com) for more detail including exclusions.



- 2/3 Ceramic FTE Ceramic Elements
- IR2 Heater size 509 x 100 x 166mm - 3.4kg
- IR3 Heater size 760 x 100 x 166mm - 4.4kg
- Aluminised steel reflectors
- Heating Up Time < 5 Minutes
- Useful Wavelength Range 2 - 10 µm
- IP rating: IPX4



For Commercial Use Only  
 Installed ceramic heaters are UL recognised (file no. E214574)